



**CDRI - Cambodia's leading  
independent development policy  
research institute**



**Royal University  
of Phnom Penh**



**Ministry of Planning**



**Office of the Council  
of Ministers**



**Supreme National  
Economic Council**



**IDRC**

**CRDI**

# **The Role of Income Diversification during the Global Financial Crisis: Evidence from Nine Villages in Cambodia**



**TONG Kimsun and PHAY Sokcheng**

**Working Paper Series No. 78**

**March 2013**

**A publication of the Global Financial Crisis and  
Vulnerability in Cambodia project supported by IDRC**



# **The Role of Income Diversification during the Global Financial Crisis: Evidence from Nine Villages in Cambodia**

**CDRI Working Paper Series No. 78**

**TONG Kimsun and PHAY Sokcheng**

**March 2013**



**CDRI**

Cambodia's leading independent development policy research institute

© 2013 CDRI - Cambodia's leading independent development policy research institute

All rights reserved. No part of this publication may be reproduced, stored in a retrieval system or transmitted in any form or by any means—electronic, mechanical, photocopying, recording, or otherwise—without the written permission of CDRI.

ISBN-10: 99950-52-75-1

**The Role of Income Diversification during the Global Financial Crisis: Evidence from Nine Villages in Cambodia**

**CDRI Working Paper Series No. 78**

*Responsibility for ideas, facts and opinions presented in this research paper rests solely with the authors. Their opinions and interpretations do not necessarily reflect the views of the Cambodia Development Resource Institute.*

**CDRI**

☎ 56, Street 315, Tuol Kork, Phnom Penh, Cambodia

✉ PO Box 622, Phnom Penh, Cambodia

☎ (+855 23) 881 384/881 701/881 916/883 603

☎ (+855 23) 880 734

E-mail: [cdri@cdri.org.kh](mailto:cdri@cdri.org.kh)

Website: [www.cdri.org.kh](http://www.cdri.org.kh)

Layout and Cover Design: Non Sokchamroeun

# CONTENTS

Acronyms and Abbreviations.....	iv
Acknowledgements .....	v
Abstract .....	vii
<b>1. Introduction .....</b>	<b>1</b>
<b>2. Literature Review .....</b>	<b>3</b>
<b>3. Data Sources and Descriptive Statistics .....</b>	<b>5</b>
<b>4. Econometric Approach .....</b>	<b>6</b>
4.1. Measurement of Household Income Diversification.....	6
4.2. Econometric Model.....	6
<b>5. Empirical Findings.....</b>	<b>8</b>
5.1. Descriptive Results.....	8
5.2. Econometric Results.....	13
<b>6. Conclusion .....</b>	<b>18</b>
<b>References.....</b>	<b>19</b>
<b>CDRI Working Papers .....</b>	<b>22</b>

## List of Tables

Table 1: Income per Capita per Year from Different Sources .....	8
Table 2: Shares of Household Income Source in Total Income, by Quintile .....	9
Table 3: Average Income per Capita per Year by Quintile .....	9
Table 4: Income Diversification by Household and Geographical Characteristics .....	11
Table 5: Descriptive Statistics, 2001–11 .....	12
Table 6: Determinants of Income Diversification.....	13
Table 7: Impact of Household Income on Diversification.....	14
Table 8: Impact of Income Diversification on per Capita Consumption and Poverty Headcount, 2001–11 .....	16
Table 9: Impact of Income Diversification on Per Capita Consumption and Poverty Headcount, 2011 .....	17

## List of Figure

Figure 1: Income Diversification by Initial Income Quintiles .....	10
--	----

## ACRONYMS AND ABBREVIATIONS

ADB	Asian Development Bank
CDRI	Cambodia Development Resource Institute
HHH	Household Head
IDRC	International Development Research Centre
MEF	Ministry of Economy and Finance
OLS	Ordinary Least Squares
RC	Red Cross
SNEC	Supreme National Economic Council

## ACKNOWLEDGEMENTS

The Cambodia Development Resource Institute is undertaking collaborative research on the global financial crisis and vulnerability in Cambodia with the Ministry of Planning —National Institute of Statistics, Office of the Council of Ministers, Royal University of Phnom Penh and Supreme National Economic Council. We wish to acknowledge the financial support of the International Development Research Centre (IDRC). Special thanks go to Dr Evan Due, IDRC senior programme specialist, for his invaluable guidance on research proposal preparation and project implementation and Dr Hossein Jalilian, former CDRI research director, for his initiative.

The study has greatly benefited from invaluable critique and guidance from Mr Ros Seilava, deputy secretary general, Ministry of Economy and Finance, Supreme National Economic Council, and Dr Rebecca F. Catalla, CDRI research adviser. The authors are grateful for comments and suggestions from colleagues at CDRI during the consultation workshops, and from all participants at the dissemination workshop held on 19 October 2012 on the draft and presentation of the results in this paper. The authors would also like to thank Ms Pon Dorina and Mr Ker Bopha for their excellent fieldwork and data processing assistance, and Ms Susan Watkins, who edited an earlier draft of the paper.

The authors are grateful to Mr Larry Strange, Dr Srinivasa Madhur and Mr Ung Sim Lee for their support and encouragement. This paper does not necessarily reflect the views of either CDRI or IDRC.

Phnom Penh  
March 2013





## ABSTRACT

This paper uses four-period panel data covering the years 2001, 2004, 2008 and 2011 to analyse the roles of rural income diversification during the global financial crisis. Income diversification is commonly defined as a proportion of income derived from non-farm activities or the number of income portfolios. However, the use of such measures is problematic because the income diversification variable is sensitive to assumptions about the thresholds used to assign households to different income categories. To address this concern, following Dimova and Sen (2010), we use the Herfindahl index constructed as the sum of squares of the shares of different income portfolios in the household: the smaller the index value, the higher the degree of income diversification.

Using both fixed- and random-effects models, we find that the number of male household members aged 15-64, household head primarily engaged in agriculture, durable assets, agricultural land endowment, health shock and crop failure are the key determinants of income diversification in rural Cambodia, where households' diversification behaviour is mainly motivated by the desire to accumulate rather than by survival concerns. This finding suggests that richer households are better able than poorer households to seize the advantages provided by a diversified income portfolio. It also implies that accumulation-led diversification has less impact on poverty, at least in the short run, than survival-led activity. Therefore policies that reduce constraints on diversification, such as risk reduction strategies, microcredit provision, rural services, rural non-farm enterprise development, infrastructure and education improvements are in general desirable.

Using the interaction of health shock and crop failure as an instrumental variable, we confirm that income diversification is strongly and positively associated with per capita consumption but is unlikely to help smooth consumption during a crisis. This result holds even if we use the poverty headcount ratio as the measure of household welfare outcomes. These findings strengthen the need for well-designed public safety nets as a risk-reducing and coping strategy.



## INTRODUCTION

In the late 2000s Cambodia suffered two major economic shocks: oil and food price increases and the global economic-financial crisis. The food and oil prices rise to record highs in 2008 is one of the most severe external shocks to have rocked the country. In its wake, the global financial crisis hit Cambodia's economy in 2009, making an already difficult situation even worse, particularly for the poor and other vulnerable groups. The crises coincided with Cambodia's property market collapse and a border stand-off with Thailand, both of which possibly contributed to the sudden economic contraction. As a result, macroeconomic indicators changed dramatically during 2007–09: economic growth declined from 10.2 percent in 2007 to 6.7 percent in 2008 and 0.1 percent in 2009, while inflation registered a record high of 19.7 percent in 2008 before dropping to -0.7 percent in 2009 and 4.0 percent in 2010. The World Bank (2009) and ADB (2008) projected that as a direct consequence of the crises, 2.2 to 2.5 million more Cambodians would fall into poverty in addition to the 4.5 million already living below the poverty line.

A number of studies confirmed that the global economic and financial crisis hit the poor and vulnerable the hardest, largely due to weak formal ex-ante and ex-post coping strategies, informal social insurance and the lack of public response (e.g. Tong *et al.* 2009; Tong 2010; Chan & Ngo 2010). However, no study has used econometric techniques to investigate the role of income diversification during the crisis.

Morduch (1995) notes that if credit and insurance markets are incomplete and formal safety nets are missing, households will choose to diversify their income sources in order to smooth consumption. Households may opt to diversify income either ex-ante or ex-post to manage the risk of shocks (Reardon *et al.* 1992) in addition to resorting to common informal insurance mechanisms, for example selling livestock and assets. The literature identifies a wide range of factors that can explain income diversification, such as response to household shocks and risk reduction and asset accumulation strategies (Ellis 1998; Barrett *et al.* 2001b). Most of these factors can be divided into pull factors and push factors. Pull factors include benefits from complementarities between activities (Norman 1974), new income opportunities created by market development (Davis & Pearce 2001), infrastructure improvement (Jalan & Ravallion 1998) and diversification for asset accumulation (Hart 1994). Push factors include ex-ante risk management (Alderman & Paxson 1992), ex-post risk coping (Carter 1997), liquidity constraints and credit market failure (Reardon *et al.* 1994) and the seasonality of agricultural activity (Sahn 1989). In other words, one could delineate the former factors as a matter of accumulation or choice and the latter as necessity or survival. A strong implication of the “diversification as accumulation” view is that the relationship between household income diversification and household income is expected to be positive—richer households will likely diversify more than poorer households. Conversely, the relationship between household income diversification and household income is expected to be negative under the “diversification as survival” view—poor households will likely diversify more than richer households. Different policies have different implications for each of these two factors (Dimova & Sen 2010). Policies which facilitate the movement of the rural poor out of high-risk low-return agricultural activities into non-farm waged work and self-employment are important if income diversification is a question of necessity, whereas investments in agricultural activities and agricultural extension services

that help overcome entry barriers to new off-farm business activities will be critical if income diversification is a matter of choice.

Income diversification has been shown to be positively associated with wealth accumulation and reduced vulnerability—at least in terms of partial consumption smoothing (Barrett *et al.* 2001a; Kinsey *et al.* 1998). However, little is known about how income diversification could protect households against exogenous shocks, particularly in Cambodia. This paper intends to fill this gap. More specifically, informed by unique panel data on rural Cambodian households between 2001 and 2011, we examine the determinants of income diversification and the response of higher income households to adversity in the face of the global economic and financial crisis.

Section 2 reviews existing studies on the key factors of income diversification and its role in mitigating shocks. Section 3 illustrates available data for the study. Section 4 discusses the econometric approaches employed in the analysis. Section 5 presents empirical findings. Section 6 concludes.

## LITERATURE REVIEW

The wealth of literature that discusses farm household diversification into rural non-farm activities can be loosely divided into two strands. Several studies have focused on the determinants of income diversification (Corral & Reardon 2001; de Janvry & Sadoulet 2001; Lanjouw & Shariff 2002; Woldenhanna & Oskam 2001; Barrett *et al.* 2001a, 2001b), while others examine the impact of income diversification on investment, poverty and inequality (Reardon *et al.* 2000; Mastumoto *et al.* 2006; Nargis & Hossain 2006; van den Berg & Kumbi 2006; Lay *et al.* 2009). These studies noted that factors which influence income diversification can be grouped into five categories: (1) individual and household characteristics (age, gender, education, marital status, household size); (2) farm characteristics (amount of cultivated land, number of crops grown, value of farm implements, membership in a farm organisation, access to agricultural extension services); (3) location (quality of roads, availability of electricity, distance from towns); (4) market barriers (inaccessibility of credit and market information); and (5) risk (variability of returns from various economic activities). Most of these studies also identified survival as a chief incentive for income diversification. Although some found that income diversification as accumulation could also be a driving factor, such motivation is more typical of the non-poor (Dercon & Krishnan 1996; Lanjouw 2001; Lay *et al.* 2009). Empirical evidence also suggests that income diversification is associated with higher income and food consumption as well as more stable income and consumption over time (Reardon *et al.* 1992; Dercon & Krishnan 1996; Reardon 1997; Barrett *et al.* 2001a; Block & Webb 2001; Canagarajah *et al.* 2001). Non-farm income sources are also effective in combating poverty and inequality (de Janvry & Sadoulet 2001). In addition, a few studies attempt to investigate the dynamics of household income diversification, such as factors associated with changes in income diversification over time (Bezu & Barrett 2011). They argue that access to savings and credit is an important factor for transition into high-return rural non-farm activities.

Despite the plethora of studies on various aspects of income diversification in developing countries, few deal with the significance of income diversification or its key determinants in Cambodia. The available studies are Chan and Acharya (2002), and Fitzgerald and So (2007). To the best of our knowledge, no study has yet examined the role of income diversification in protecting households during external shocks.

Using household data collected in 2001 from nine villages in rural Cambodia,<sup>1</sup> Chan and Acharya (2002) attempted to identify sources of household income by focusing on the absolute income derived from different sources, the extent to which rural households depended on common property resources, the difference between rich and poor households' dependence on common property resources and the availability of common property resources. They argued that villagers in the study area had begun to diversify their income generating activities into wage labour and trade due to the declining availability of common property resources. Fitzgerald and So (2007), using a similar household data set along with a follow-up survey in 2004/05, analysed the key factors in community well-being and household mobility and showed that the proportion of household income from agriculture and common property resources fell, while that from self-employment and wage labour rose between 2001 and 2004/05—implying that households in all study villages continued to diversify their income. They added that the most

<sup>1</sup> Three of these nine villages were surveyed in 1996–97 as part of a CDRI study (Murshid 1998).

successful households and communities were those that have been able to diversify. However, both studies relied heavily on descriptive statistics that do not control for other factors that also influence household income diversification.

This study uses econometric approaches, i.e. fixed- and random-effects modelling, to eliminate unobserved household attitudes to risk that may be correlated with household income diversification behaviour, and instrumental variable methods to address the endogeneity of household income diversification. Our study is distinct from previous studies in two critical aspects. First, we used unique survey data covering the years 2001, 2004/05, 2008 and 2011, i.e. before, during and after the dual crises hit, meaning that significant response is expected from households. Second, we investigate not only the determinants of income diversification but also its role during the twin shocks.

## DATA SOURCES AND DESCRIPTIVE STATISTICS

This study is informed by four-period panel household data collected by CDRI in 2001, 2004/05, 2008 and 2011. The information includes household demographics, housing condition, land ownership and transactions, credit markets, food and non-food consumption, non-land assets, livestock ownership, household income, agricultural production, production expenditure, wages and self-employment were collected. A brief description of the sample villages' characteristics is given in Fitzgerald and So (2007).

Information on household income from various sources such as agricultural produce, livestock, common property resources and off-farm activities has been collected over 10 years. But income sources such as transfers from non-government organisations, political parties, the Red Cross and pagodas are not comparable across the study period because they were incorporated into the questionnaire only in 2008. For this reason, all incomparable income sources are excluded from the analysis. In addition, gross rather than net household income is used because some income sources were collected as gross income rather than net income. The gross income was converted to constant 2001 prices using updated village price indexes originally constructed by Albert (2009), and into adult equivalence.<sup>2</sup>

---

<sup>2</sup> The consumption of a child aged 14 or below is assumed to be half that of an adult aged 15 and above.

## ECONOMETRIC APPROACH

### 4.1. Measurement of Household Income Diversification

Definitions and measures of household income diversification vary within the literature. Some studies measure it as the proportion of income derived from non-farm sources (Reardon *et al.* 1992; Davis *et al.* 2010), while others use several different types of income portfolios (e.g. one source of income will get a value of one [farming], two sources of income will get the value of two [farm and non-farm activities] and so on). Dimova and Sen (2010) note that the use of such measures is problematic because the income diversification variable is sensitive to assumptions about the income thresholds used to assign households to different income categories. Further, it is unclear whether a household that generates, for example, 90 percent of its income from farming is seen as being more diversified than a household which relies solely on farming. To address this concern, following Dimova and Sen (2010), we use the Herfindahl index constructed as the sum of squares of the shares of different income portfolios in the household: the smaller the index value, the higher the degree of income diversification. This measure is more appropriate than the above measures because it does not need additional assumptions for grouping households into different income diversification categories (Dimova & Sen 2010; Ellis 2000b).

### 4.2. Econometric Model

If  $C_{it}$  is per capita consumption for household  $i$  at time  $t$ , we define  $C_{it}$  as a function of income diversification index  $D_{it}$  and other explanatory variables  $X_{it}$ , which can be written as

$$C_{it} = \alpha D_{it} + \beta X_{it} + a_i + v_{it} \quad (1)$$

where  $X_i$  represents household characteristics such as gender, age, education and main occupation of household head, household size, agricultural land, durable asset index, livestock index<sup>3</sup> and housing condition;  $a_i$  captures unobserved effects,  $v_i$  is a random error term; and  $\alpha$ ,  $\beta$  are the parameters we would like to estimate.

Income diversification index  $D_i$  is often viewed as an endogenous variable because household income diversification behaviour can be correlated with a household's ability or risk perception, which is not observed by equation (1) (Ersado 2005; Dimova & Sen 2010). If  $D_i$  is correlated with  $v_i$ , ordinary least squares (OLS) estimation of equation (1) generally generates inconsistent estimators of  $\alpha$  and  $\beta$  (Wooldridge 2002). To address the problem of endogeneity, we employed the instrumental variables (IV) method. The IV approach with  $D_i$  endogenous variables requires an observable variable  $Z_i$ , not in equation (1), that satisfies two conditions: (a)  $Z_i$  must be uncorrelated with  $v_i$ ; (b)  $Z_i$  must have a relationship with  $D_i$ . Wooldridge (2002) notes that the covariate between  $Z_i$  and  $v_i$  can never be checked or even tested. In practice, one must maintain this assumption by appealing to economic theory. The correlation between  $D_i$  and  $Z_i$  can be tested by estimating the simple regression as

$$D_{it} = \phi X_{it} + \theta Z_{it} + b_i + u_{it} \quad (2)$$

<sup>3</sup> Durable asset and livestock indexes are constructed using the principal component approach proposed by Filmer and Pritchett (1998). The variables used to compile the durable asset index are radio, television, bicycle, motorcycle, animal-drawn cart, sewing machine, boat, plough/harrow and rice mill; those used to construct the livestock index are cows, buffalos, pigs, horses, chickens, ducks and fish.



The assumption holds only if  $\theta \neq 0$  at a small significance level (5 percent or 1 percent). Previous studies (e.g. Dimova & Sen 2010) use different types of village level shocks (e.g. refugee inflow, epidemic, natural disaster), rainfall variability over the past year,<sup>4</sup> education of household head and death of working member(s) of the household in the past year as instrumental variables for constructing the income diversification index, assuming that these variables will cause income shock and impact on income diversification but have no direct effect on current consumption. In our study, we use the interaction of two dummy variables reflecting sickness/injury/death of household member(s), and crop/other damage due to flood/drought as an instrumental variable. The best instrumental variable for  $D_i$  is the linear combination of  $X_i$  and  $Z_i$ , which is the fitted value of equation (2):  $\hat{D}_i$ . Once we have  $\hat{D}_i$ , we can plug it into equation (1):

$$C_{it} = \alpha \hat{D}_{it} + \beta X_{it} + a_i + v_{it} \quad (3)$$

Because we use  $\hat{D}_i$  as the IV for  $D_i$ , the parameters of interest  $\alpha$  and  $\beta$  of equation (3) can now be estimated by OLS.

Given our four period panel data, it is not appropriate to assume that the observations are independently distributed across time. For example, unobserved factors (such as ability) that affected a household's welfare in 2001 will also affect that household's welfare in 2011. Failing to take unobserved effects into account may lead to incorrect standard errors and inefficient estimations (Greene 2007; Wooldridge 2002). In this regard, various approaches have been introduced for estimating panel data models with unobserved effects, namely fixed-effects or random-effects modelling. In empirical work, one has to decide whether a fixed- or random-effects estimator is more efficient. This largely depends on the assumption of  $a_i(b_i)$ . If  $a_i(b_i)$  is uncorrelated with the variables in  $X_{it}$  ( $X_i$  and  $Z_i$ ), the random-effects model is appropriate. But if  $a_i(b_i)$  is correlated with the variables in  $X_{it}$  ( $X_i$  and  $Z_i$ ), the fixed-effects model is the appropriate estimator. To verify this assumption, the Hausman specification test helps us decide whether fixed or random effects are the preferred specification for our data (Greene 2007; Wooldridge 2002).

Since per capita consumption  $C_{it}$  and income diversification index  $D_{it}$  are continuous variables, the most common OLS method is adopted. To examine the relationship between poverty headcount ratio and income diversification, we employed probit model.<sup>5</sup>

<sup>4</sup> Ersado (2005) uses only two seasonal (planting and harvesting) rainfall variables with a lag as instrumental variables.

<sup>5</sup> It is important to note that there is no Stata command for a conditional fixed-effects probit model, as it does not have sufficient statistics to allow fixed effects to be conditioned out of likelihood (StataCorp 2010). Instead of fixed-effects estimators, we report population-average estimators. Stata command of xtreg with fe and re option and xtprobit with re and pa option are used to examine the relationship between income diversification, per capita consumption and poverty headcount ratio.

## EMPIRICAL FINDINGS

### 5.1. Descriptive Results

Rural household income is derived from many different sources. In this study, we categorise household income into three main sources: crops, livestock and off-farm. Table 1 shows that total income rose by 75 percent in 2001–04 and 52 percent in 2004–08 before dropping by 20 percent in 2008–11. This suggests that the effect of the economic and global financial crisis may have persisted for longer than one year. Crop income grew by 97 percent in 2001–04 and 79 percent in 2004–08 but declined by 10 percent in 2008–11, while livestock income and off-farm income decreased by 31 percent and 27 percent during the last period. The share of crop income in total income increased from 33 percent in 2001 to 50 percent in 2011, indicating its growing role in rural livelihoods. In contrast, the share of livestock income decreased from 23 percent in 2001 to 15 percent in 2011, while off-farm income declined from 43 percent in 2001 to 35 percent in 2011.

Table 1: Income per Capita per Year from Different Sources

	Per Capita Income at 2001 prices (‘0000 riels)				Growth (%)		
	2001	2004	2008	2011	2004	2008	2011
Crop	15.59	30.67	55.01	49.66	96.73	79.36	-9.73
Livestock	11.04	14.38	22.22	15.32	30.25	54.52	-31.05
Off-farm	20.45	37.38	48.40	35.18	82.79	29.48	-27.31
Total income	47.08	82.43	125.64	100.16	75.08	52.42	-20.28
% crop	0.33	0.37	0.44	0.50			
% livestock	0.23	0.17	0.18	0.15			
% off-farm	0.43	0.45	0.39	0.35			

Source: Authors' calculation

The shares of income sources by income quintile (1 = lowest income) are presented in Table 2. The only clear picture of diversification behaviour is among households in the fifth quintile, whose share of crop income increases gradually from 30.8 percent in 2001 to 58.7 percent in 2011, and whose livestock and off-farm income declines. This suggests that the richest households were more likely to depend on crop production in 2011 than in 2001. Income diversification behaviour in other quintiles seems to be mixed.

Table 2: Shares of Household Income Source in Total Income, by Quintile (%)

Crops	1	2	3	4	5
2001	0.425	0.389	0.362	0.304	0.308
2004	0.610	0.492	0.414	0.413	0.313
2008	0.518	0.350	0.326	0.379	0.509
2011	0.523	0.409	0.346	0.411	0.587
Livestock					
2001	0.201	0.231	0.183	0.230	0.261
2004	0.176	0.183	0.213	0.197	0.155
2008	0.145	0.220	0.225	0.162	0.164
2011	0.166	0.182	0.185	0.177	0.128
Off-farm					
2001	0.375	0.380	0.455	0.465	0.431
2004	0.213	0.325	0.373	0.390	0.532
2008	0.337	0.430	0.449	0.459	0.326
2011	0.311	0.409	0.469	0.412	0.285

Source: Authors' calculation

In absolute terms, per capita income of the first quintile was one-ninth that of the fifth quintile in 2001 (Table 3); this income gap had widened to 16 times in 2011. Per capita consumption for the fifth quintile was 4.4 times that of the first quintile in 2001, and the gap between the two narrowed to 3.8 times in 2011 (Tong forthcoming). This result is not surprising on two counts: we employed per capita gross income, which is normally higher than net income; and, importantly, income is less reliable than consumption as a poverty indicator in most developing countries (Haughton & Khandker 2008). The richer households are more likely to have benefited the most from economic growth during 2001–04 and been the least affected by the global economic and financial crisis. The poorest group seems to have been hit the hardest by the crisis, as its per capita income declined by 27.6 percent between 2008 and 2011.

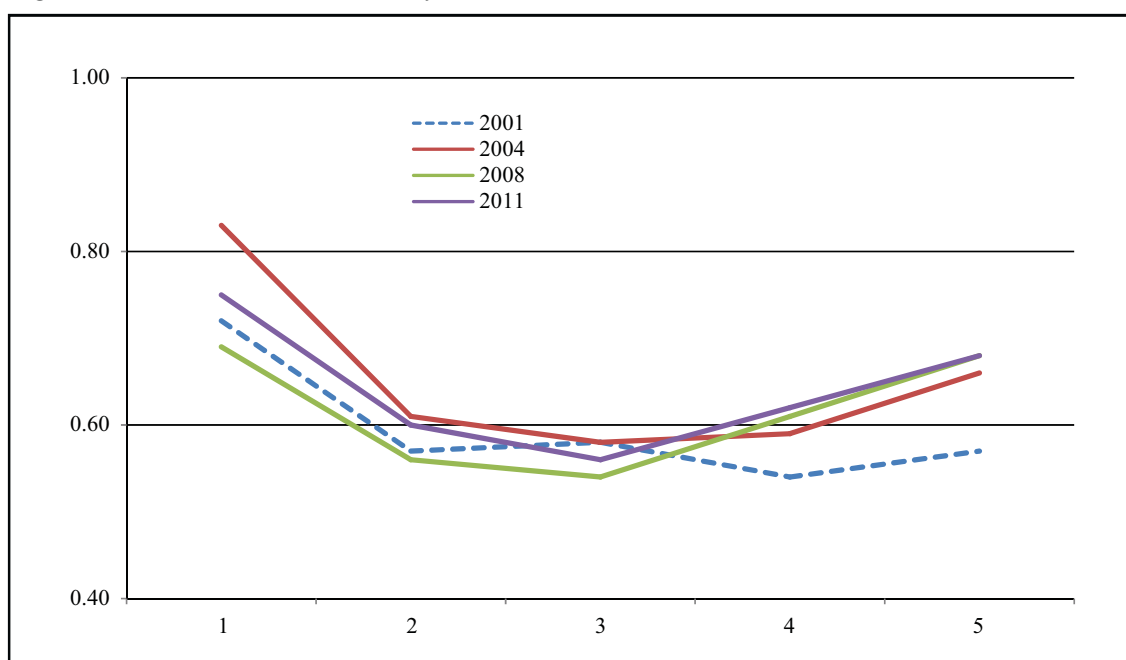
Table 3: Average Income per Capita per Year by Quintile ('0000 riels at 2001 prices)

	1	2	3	4	5
2001	11.56	26.68	38.78	55.37	103.32
2004	13.17	35.59	55.69	84.87	223.55
2008	22.51	56.84	93.67	145.07	311.06
2011	16.29	42.46	70.56	113.64	258.67
Growth rate (%)					
2004	13.92	33.39	43.60	53.27	116.36
2008	70.91	59.70	68.19	70.93	39.14
2011	-27.63	-25.29	-24.67	-21.66	-16.84

Source: Authors' calculation

To observe the pattern of income diversification, we plot the household diversification index for each year against income quintile in the initial period (Figure 1). We note that households in the first quintile tend to be less diversified than others. The literature suggests that, given insufficient assets, opportunities for diversification may be very limited at low income levels (Ersado 2005). Once a certain threshold is passed, however, diversification opportunities will be fully exploited. In line with previous studies, we observe that households in the second and third quintiles are more likely to diversify their income sources than those in the first quintile. Since households in the fourth and fifth quintiles are less diversified than those in the second and third quintiles, the relationship between income diversification and income is U-shaped, making it more difficult to conclude which hypothesis our evidence supports—diversification as accumulation or diversification as survival. Regardless of the starting point, households in the fourth and fifth quintiles become less diversified over time. The level of diversification was the lowest in 2008 for the three poorer income groups. Given this inconsistency, we attempt to control for various factors including year-specific shocks that may influence diversification behaviour on a year-to-year basis in our empirical analysis.

Figure 1: Income Diversification by Initial Income Quintiles



Source: Authors' calculation

Table 4 presents the Herfindahl index of household and geographical characteristics. It indicates that male-headed households and households whose head is mainly engaged in agriculture are likely to diversify their income sources more than female-headed households. The proportion of dependency in the family does not induce any significant differences in income diversification, although Dimova and Sen (2010) acknowledge that a higher dependent ratio drives the need to find better income sources. Household size,<sup>6</sup> educational level of household head and age of household head do not seem to affect income diversification either.

<sup>6</sup> Households with more members (including children) have more available labour for off-farm income earning activities such as collecting and selling firewood, management of livestock, daily waged labour or small trade (Block & Webb 2001).

We did not observe large differences in diversification across the study villages, but household incomes in Kompong Tnaot and Khsach Chi Ros are the most diversified.

Table 4: Income Diversification by Household and Geographical Characteristics

	2001	2004	2008	2011
HH size				
1-5	0.611	0.679	0.634	0.664
6-10	0.582	0.635	0.602	0.621
>10	0.625	0.594	0.590	0.629
HHH gender				
Female	0.641	0.716	0.650	0.676
Male	0.585	0.638	0.606	0.631
HHH age				
20-34	0.591	0.657	0.639	0.704
35-50	0.583	0.654	0.609	0.632
>50	0.620	0.655	0.620	0.643
HHH main occupation				
Non-agriculture	0.638	0.697	0.647	0.682
Agriculture	0.543	0.579	0.556	0.538
HHH education				
No school	0.579	0.661	0.618	0.650
Primary	0.588	0.642	0.609	0.629
Secondary	0.635	0.665	0.630	0.645
High school	0.642	0.722	0.668	0.694
Dependency ratio				
0	0.617	0.637	0.635	0.672
0-50%	0.594	0.653	0.614	0.630
>50%	0.594	0.663	0.612	0.651
Geographical area				
Andoung Trach	0.538	0.604	0.523	0.560
Ba Baong	0.708	0.807	0.766	0.758
Dang Kdar	0.533	0.633	0.595	0.620
Kanhchor	0.627	0.751	0.673	0.747
Khsach Chi Ros	0.517	0.563	0.513	0.525
Kompong Tnaot	0.483	0.581	0.485	0.520
Prek Kmeng	0.626	0.552	0.612	0.612
Trapeang Prei	0.549	0.668	0.680	0.681
Tuol Krasaing	0.739	0.705	0.680	0.731

Source: Authors' calculation

The descriptive statistics of dependent and explanatory variables illustrated in Table 5 indicate no significant change in household demographic variables. On average, the Herfindahl index tends to increase over time, indicating that households in the selected study villages are less diversified than they were 10 years ago. Household size shows a slight downward trend, as does the number of children aged 0-14. That household heads attained an average of only three years' education implies that a majority of household heads were unable to complete primary school. Average agricultural landholding per household increased from 1.50 hectares in 2001 to 2.19 hectares in 2008 before dropping back to 2.12 hectares in 2011, while at the same time agricultural landlessness showed a rising trend (see Tong [forthcoming] for an explanation of other explanatory variables).

Table 5: Descriptive Statistics, 2001–11

	2001	2004	2008	2011
Herfindahl index	0.60	0.66	0.62	0.64
HH size	5.81	5.81	5.76	5.57
Children aged 0-6	1.01	0.87	0.74	0.64
Children aged 7-14	1.44	1.37	1.16	0.99
Adult males aged 15-64	1.48	1.59	1.73	1.81
Adult females aged 15-64	1.65	1.72	1.83	1.80
Adults aged 64+	0.23	0.26	0.30	0.32
HHH gender (1=male)	0.81	0.78	0.77	0.76
HHH age (years)	43.84	46.70	47.82	51.36
HHH marital (1=married)	0.84	0.81	0.79	0.78
HHH education (years)	3.35	3.22	3.43	3.29
HHH occupation (1=agriculture)	0.42	0.36	0.33	0.28
Durable index	0.06	0.46	0.78	0.86
Agricultural land (ha)	1.50	1.58	2.19	2.13
House dummy (1=thatch house)	0.53	0.39	0.23	0.16
House dummy (1=wooden house)	0.47	0.60	0.76	0.84
House dummy (1=concrete house)	0.01	0.01	0.01	0.01
Shock dummy (1=health & crop shock)	0.33	0.09	0.04	0.02

Note: Sampling weight is applied.

Source: Authors' calculation

## 5.2. Econometric Results

The results of the fixed- and random-effects models (equation 2) for household income diversification strategies are presented in Table 6. Because the Hausman test suggests that fixed effects might be superior (Prob>chi2 is smaller than 0.05) to random effects, our interpretation is primarily based on the fixed-effects model. We find that the number of adult males increases the likelihood of household income diversification. Households whose head is mainly engaged in agriculture are more likely to participate in diversification. Wealth status, which is proxied by the durable asset index and agricultural land endowment, is positively associated with greater diversification. Households experiencing health problems or crop failure are positively linked to diversification strategies. In line with our descriptive analysis, households in rural Cambodia are now less likely to diversify their income sources than they were 10 years ago.

Table 6: Determinants of Income Diversification

	Random effects	Fixed effects
Children aged 0-6	-0.003	0.000
Children aged 7-14	-0.005	0.001
Adult males aged 15-64	-0.010***	-0.009*
Adult females aged 15-64	-0.005	0.000
Adults aged 64+	0.011	-0.011
HHH sex (1=male)	-0.021	0.009
HHH age (years)	-0.001	0.000
HHH marital status (1=married)	0.006	-0.024
HHH education (years)	0.003***	0.000
HHH occupation (1=agriculture)	-0.091***	-0.047***
Durable index	-0.002	-0.009**
Land dummy (1=<1ha)	-0.100***	-0.053***
Land dummy (1=1-2 ha)	-0.088***	-0.065***
Land dummy (1=2-3 ha)	-0.061***	-0.061***
Land dummy (1=3-4 ha)	-0.061***	-0.050**
Land dummy (1=>4 ha)	-0.071***	-0.042*
House dummy (1=wooden house)	0.007	-0.011
Shock dummy (1=health & crop shock)	-0.016	-0.026**
Credit dummy (1=access to MFI)	-0.011	-0.006
Year dummy (1=2004)	0.049***	0.055***
Year dummy (1=2008)	0.003	0.019*
Year dummy (1=2011)	0.024**	0.043***
Constant	0.771***	0.698***

Note: \* significant at 10%, \*\* significant at 5%, \*\*\* significant at 1%.

Although some findings are consistent with expectations, a number of unexpected results also emerged. For instance, human capital measured by household head education is found to have no significant role in the diversification decision, which, though contrary to findings by Glewwe and Hall (1998) and Barrett *et al.* (2001a), is in line with Block and Webb's (2001). This may reflect the possibility that the low educational attainment of household heads is a constraint on the capacity to diversify income sources. The market barrier of poor access to microfinance is also found to have no significant influence on diversification. Other household characteristics such as the number of dependants, the number of adult females and household head gender, marital status and age are also found to be insignificant.

Table 7: Impact of Household Income on Diversification

	Random effects	Fixed effects	Random effects	Fixed effects
HH income (log)	-0.026***	-0.023***	-0.024***	-0.024***
Children aged 0-6			-0.005	-0.002
Children aged 7-14			-0.005	0.000
Adult males age 15-64			-0.011***	-0.011**
Adult females age 15-64			-0.008**	-0.004
Adults age 64+			0.008	-0.012
HHH sex (1=male)			-0.024	0.005
HHH age (years)			0.000	0.000
HHH marital status (1=married)			0.009	-0.027
HHH education (years)			0.004***	0.000
HHH occupation (1=agriculture)			-0.074***	-0.035***
Durable index			0.000	-0.007*
Land dummy (1=<1ha)			-0.079***	-0.038**
Land dummy (1=1-2 ha)			-0.063***	-0.047***
Land dummy (1=2-3 ha)			-0.032**	-0.043**
Land dummy (1=3-4 ha)			-0.029	-0.028
Land dummy (1=>4 ha)			-0.031*	-0.013
House dummy (1=wooden house)			0.011	-0.011
Shock dummy (1=health & crop shock)			-0.018	-0.030**
Credit dummy (1=access to MFI)			-0.013	-0.008
Year dummy (1=2004)			0.054***	0.060***
Year dummy (1=2008)			0.023**	0.040***
Year dummy (1=2011)			0.035***	0.053***
Constant	0.969***	0.935***	1.058***	1.006***

Note: \* significant at 10%, \*\* significant at 5%, \*\*\* significant at 1%.



Table 7 presents our estimates of equation (2), where the key independent variable, household income, is included. The coefficient of household income is negative and statistically significant at 1 percent level across the different specifications. In other words, higher income is associated with lower Herfindahl index values i.e. a higher degree of income diversification (see section 4.1). This finding seems to support the hypothesis that income diversification in rural Cambodia is used as a means of accumulation and not as a means of survival. Other explanatory variables are generally consistent with our previous estimates (see also Table 6).

To examine the effect of income diversification on welfare and poverty, we estimate equation (1) using the econometric methods explained in section 4.2. The results are presented in Table 8. Holding other factors constant, the coefficient of the Herfindahl index is negative and statistically significant at 1 percent regardless of the estimation methods i.e. random or fixed effects (columns 2 and 3). This strongly suggests that income diversification has a significant positive impact on per capita consumption. Education seems to play an important role in improving per capita consumption as well, but only if an individual attains at least eight years of schooling. Agricultural land has negative but increasing effects on per capita consumption since the linear term has negative and the quadratic term has positive and significant coefficients. Households whose head is mainly engaged in agriculture tend to have lower per capita consumption than those whose head is employed in non-agricultural activities. Other factors which negatively affect per capita consumption are the presence of persons any age except children 7-14. .

Columns (4) and (5) in Table 8 show that the Herfindahl index is positively associated with the poverty headcount ratio—its coefficient is statistically significant at the 1 percent level. This confirms that income diversification has a poverty reduction effect. In addition, our results reveal that only children aged 7-14 is unlikely to increase the likelihood of a household being poor. Households with a married head, with a head involved in agricultural activities or which depend on collecting firewood for cooking fuel are more likely to be poor.

To gain deeper insight into the extent to which income diversification helped rural people cope with the economic and financial crisis, we re-estimate equation (1) by reducing the four-period panel data to cross-sectional data in 2011. Our result illustrates that the coefficient of the Herfindahl index remains negative for the per capita consumption equation (Table 9, column 2) and positive for the poverty headcount ratio equation (Table 9, column 3), but is not statistically significant at the 10 percent level. This simply implies that income diversification is unlikely to play a role as an effective ex-ante risk coping strategy during an external shock such as the global economic and financial crisis.

Table 8: Impact of Income Diversification on per Capita Consumption and Poverty Headcount, 2001–11

	Consumption per capita (log)		Poverty headcount ratio	
	Random effects	Fixed effects	Random effects	Population Average
Herfindahl index	-0.012***	-0.025**	0.088***	0.079***
Lag consumption (log)	0.319***	-0.197***	-0.724***	-0.660***
Children aged 0-6	-0.053***	-0.037***	0.111***	0.102***
Children aged 7-14	0.001	-0.007	-0.005	-0.005
Adult males age 15-64	-0.039***	-0.073***	0.143***	0.129***
Adult females age 15-64	-0.026***	-0.028**	0.081**	0.073**
Adults age 64+	-0.084***	-0.097***	0.288***	0.263***
HHH sex (1=male)	0.117***	0.170***	-0.486***	-0.447***
HHH age (years)	-0.001	0.001	-0.000	-0.000
HHH marital status (1=married)	-0.070***	-0.087***	0.520***	0.477***
HHH education (years)	-0.006**	-0.033***	0.040	0.037
HHH education squared (years)	0.001	0.002**	-0.007**	-0.006**
HHH occupation (1=agriculture)	-0.019	-0.138**	0.340***	0.308***
Durable index	0.014	0.013	-0.019	-0.018
Livestock index	-0.017**	-0.011	0.099***	0.089***
Agricultural land (log)	-0.035**	-0.054***	0.168***	0.152***
Agricultural land squared (log)	0.025**	0.038**	-0.113***	-0.101***
Toilet dummy (1=yes)	0.104***	0.033	-0.404***	-0.371***
House dummy (1=wooden house)	0.120***	0.067	-0.292**	-0.269**
Fuel (1=self-collected firewood)	-0.178***	-0.024	0.521***	0.478***
Year dummy (1=2008)	0.224***	0.211***	-0.035	-0.033
Year dummy (1=2011)	-0.130***	0.058**	0.466***	0.422***
Constant	6.222***	10.965***	-1.974	-1.783

Note: \* significant at 10%, \*\* significant at 5%, \*\*\* significant at 1%.

Table 9: Impact of Income Diversification on Per Capita Consumption and Poverty Headcount, 2011

	Per capita consumption (log)	Poverty headcount ratio
Herfindahl index	-0.011	0.042
Lag consumption (log)	0.275***	-0.892***
Children aged 0-6	-0.015	0.110
Children aged 7-14	-0.006	0.046
Adult males aged 15-64	-0.080***	0.189**
Adult females aged 15-64	-0.019	0.042
Adults aged 64+	-0.129***	0.371***
HHH sex (1=male)	0.118*	-0.518**
HHH age (years)	-0.000	-0.002
HHH marital status (1=married)	-0.020	0.401
HHH education (years)	-0.005	-0.050
HHH education squared (years)	0.000	0.006
HHH occupation (1=agriculture)	-0.077	0.203
Durable index	0.015	-0.067
Livestock index	0.018	-0.064
Agricultural land (log)	-0.075***	0.171*
Agricultural land squared (log)	0.069***	-0.145*
Toilet dummy (1=yes)	0.105***	-0.296*
House dummy (1=wooden house)	0.077*	-0.325*
Fuel (1=self-collected firewood)	-0.191***	0.571**
Constant	6.652***	2.196

Note: \* significant at 10%, \*\* significant at 5%, \*\*\* significant at 1%. HHH: Household Head. Village dummies are also included.

## CONCLUSION

Crop income was the least affected by the global economic and financial crisis and has become the main income source for rural households. Using both fixed- and random-effects models, we find that the number of male household members aged 15-64, household head primarily engaged in agriculture, durable assets, agricultural land endowment, health shock and crop failure are the key determinants of income diversification in rural Cambodia, where household diversification behaviour is mainly motivated by accumulation rather than by survival. This suggests that richer households are better able to seize the advantages provided by a diversified income portfolio than are poorer households. It also implies that accumulation-led diversification has less impact on poverty, at least in the short run, than survival-led activity. Therefore policies that reduce constraints on diversification, such as risk-reduction strategies, microcredit provision, rural services, rural non-farm enterprise development and infrastructure and education improvements are in general desirable.

Using the interaction of health shock and crop failure as an instrumental variable, we confirm that income diversification is strongly and positively associated with per capita consumption but is unlikely to help smooth consumption during a crisis. This holds true if we use the poverty headcount ratio as the measure of household welfare. These findings have strengthened the need for the public provision of well-designed safety nets as a risk-reducing and coping strategy. Our result also encourages the promotion of non-farm activities given that income diversification has played a critical role in improving household per capita consumption and poverty headcount ratio. Hence, development of non-farm activities should complement the effort to develop agriculture.

## REFERENCES

- Albert, J.R. (2009), “Poverty Dynamics Study 2008, Report II: Technical Report on Methodology for Poverty Lines”, mimeo (Phnom Penh: World Bank)
- Alderman, H. & C. Paxson (1992), *Do the poor insure? A synthesis of the literature on risk and consumption in developing countries*, WPS 1008 (Washington, DC: World Bank, Agricultural and Rural Development Department)
- Asian Development Bank (2008), *Food Prices and Inflation in Developing Asia: Is Poverty Reduction Coming to an End?* (Manila: ADB)
- Barrett, C., M. Bezuneh & A. Abound (2001a), “Income Diversification, Poverty Traps and Policy Shocks in Cote d’Ivoire and Kenya”, *Food Policy*, Vol. 26 (4), pp. 367-384
- Barrett, C., T. Reardon & P. Webb (2001b), “Nonfarm Income Diversification and Household Livelihood Strategies in Rural Africa: Concepts, Issues, and Policy Implications”, *Food Policy*, Vol. 26 (4), pp. 315-331
- Bezu, S. & C. Barrett (2011), *Employment Dynamics in the Rural Nonfarm Sector in Ethiopia: Do the Poor Have Time on Their Side?* (Aas: Department of Economics and Resource Management, Norwegian University of Life Sciences)
- Block, S. & P. Webb (2001), “The Dynamics of Livelihood Diversification in Post-famine Ethiopia”, *Food Policy*, Vol. 26 (4), pp. 333-350
- Canagarajah, S., C. Newman & R. Bhattamishra (2001), “Nonfarm Income, Gender and Inequality: Evidence from Rural Ghana and Uganda”, *Food Policy*, Vol. 26 (4), pp. 405-420
- Carter, M.R. (1997), “Environment, Technology and the Social Articulation of Risk in West African Agriculture”, *Economic Development and Cultural Changes*, Vol. 45 (3), pp. 557-591
- Chan S. & S. Acharya (2002), *Facing the Challenges of Rural Livelihoods: A Perspective from Nine Villages in Cambodia*, Working Paper 25 (Phnom Penh: CDRI)
- Chan S. & Ngo S. (2010), *The Impact of Economic Downturn on Households and Communities in Cambodia*, Research Report (Phnom Penh: Cambodian Economic Association)
- Corral, L. & T. Reardon (2001), “Rural Nonfarm Incomes in Nicaragua”, *World Development*, Vol. 29 (3), pp. 427-442
- Davis, J. & D. Pearce (2001), “The Rural Non-farm Economy in Central and Eastern Europe”, in Z. Lerman & C. Csaki (eds.), *The Challenge of Rural Development in the EU Accession* (Washington, DC: World Bank)
- Davis, J., P. Winter, G. Carletto, K. Coarrubias, W. Quinones, A. Zezza, K. Stamoulis, C. Azzarri & S. Digiuseppe (2010), “A Cross-Country Comparison of Rural Income Generating Activities”, *World Development*, Vol. 38 (1), pp.48-63
- de Janvry, A. & E. Sadoulet (2001), “Income Strategy among Rural Households in Mexico: The Role of Off-farm Activities”, *World Development*, Vol. 29 (3), pp. 467-480
- Dercon S. & P. Krishnan (1996), “Income Portfolios in Rural Ethiopia and Tanzania: Choices and Constraints”, *Journal of Development Studies*, Vol. 32 (6), pp. 850-870
- Dimova, R. & K. Sen (2010), *Is Household Income Diversification a Means of Survival or a Means of Accumulation? Panel Data Evidence from Tanzania*, Working Paper No.122 (Manchester: Brooks World Poverty Institute, University of Manchester)
- Ellis, F. (1998), “Household strategies and rural livelihood diversification”, *Journal of Development studies*, Vol. 35 (1), pp. 1-38

- Ellis, F. (2000b), "The Determinants of Rural Livelihood Diversification in Developing Countries", *Journal of Agricultural Economics*, Vol. 51 (2), pp. 289-302
- Ersado, L. (2005), "Income diversification before and after economic shocks: evidence from urban and rural Zimbabwe", *Development Southern Africa*, Vol. 22 (1), pp. 27-45
- Filmer, D. & L. Pritchett (1998), *Estimating Wealth Effect Without Expenditure Data—or Tears: An Application to Educational Enrollments in States of India*, Policy Research Working Paper No. 1994 (Washington, DC: World Bank)
- Fitzgerald, I. & So S. (2007), *Moving Out of Poverty: Trends in Community Well-Being and Household Mobility in Nine Cambodian Villages* (Phnom Penh: CDRI)
- Glewwe, P. & G. Hall (1998), "Are Some Groups More Vulnerable to Macroeconomic Shocks than Others? Hypothesis Test Based on Panel Data from Peru", *Journal of Development Economics*, Vol. 56 (1), pp. 181-206
- Greene, W. (2007), *Econometric Analysis*, Sixth Edition (Upper Saddle River, NJ: Prentice-Hall)
- Hart, G. (1994), "The Dynamics of Diversification in an Asian Rice Region", in B. Koppe, J. Hawkins & W. James (eds.), *Development or Deterioration? Work in Rural Asia* (London: Lynne Reinner)
- Haughton, J. & S.R. Khandker (2008), *Handbook of Poverty Analysis* (Washington, DC: World Bank)
- Jalan, J. & M. Ravallion (1998), *Geographic Poverty Traps?* Discussion Paper 86 (Boston: Institute for Economic Development, Boston University)
- Kinsey, B., K. Burger & J.W. Gunning (1998), "Coping with Drought in Zimbabwe: Survey Evidence on Response of Rural Households to Risk", *World Development*, Vol. 26 (1), pp. 89-110
- Lanjouw, P. (2001), "Nonfarm Employment and Poverty in Rural El Salvador", *World Development*, Vol. 29 (3), pp. 529-547
- Lanjouw, P. & A. Shariff (2002), *Rural Nonfarm Employment in India: Access, Income and Poverty Impact*, Working Paper No. 18 (New Delhi: National Council of Applied Economic Research)
- Lay, J., U. Narloch & T.O. Mahmoud (2009), "Shocks, Structural Change, and the Patterns of Income Diversification in Burkina Faso", *African Development Review*, Vol. 21 (1), pp. 36-58
- Mastumoto, T., Y. Kijima & T. Yamano (2006), "The Role of Nonfarm Activities and Migration in Reducing Poverty: Evidence from Ethiopia, Kenya and Uganda", *Agricultural Economics*, Vol. 35 (S3), pp. 449-458
- Morduch, J. (1995), "Income Smoothing and Consumption Smoothing", *Journal of Economic Perspectives*, Vol. 9 (3), pp. 103-114
- Murshid, K.A.S. (1998), *Food Security in an Asian Transitional Economy: The Cambodian Experience*, Working Paper 6 (Phnom Penh: CDRI)
- Nargis, N. & M. Hossain (2006), "Income Dynamics and Pathway Out of Rural Poverty in Bangladesh 1988-2004", *Agricultural Economics*, Vol. 35 (S3), pp. 425-435
- Norman, D.W. (1974), "Rationalising Mixed Cropping Under Indigenous Conditions: The Example of Northern Nigeria", *Journal of Development Studies*, Vol. 11 (1), pp. 3-21
- Reardon, T. (1992) "Income Diversification of Rural Households in the Sahel", *Rural Development Studies*, Vol. 24, pp. 281-297

- Reardon, T., E. Crawford & V. Kelly (1994), “Links Between Nonfarm Income and Farm Investment in African Households: Adding the Capital Market Perspective”, *American Journal of Agricultural Economics*, Vol. 28 (2), pp. 1172-1176
- Reardon, T., C. Delgado & P. Matlon (1992), “Determinants and Effects of Income Diversification amongst Farm Households in Burkina Faso”, *Journal of Development Studies*, Vol. 28 (2), pp. 264-296
- Reardon, T. (1998), “Using Evidence of Household Income Diversification to Inform Study of the Rural Nonfarm Labor Market in Africa”, *World Development*, Vol. 25 (5), pp. 735-747
- Reardon, T., J. Taylor, K. Stamoulis, P. Lanjouw & A. Balisacan (2000), “The Effects of Nonfarm Employment on Rural Income Inequality in Developing Countries: An Investment Perspective”, *Journal of Agricultural Economics*, Vol. 51 (2), pp. 266-288
- Sahn, D.E. (1989), *Seasonal Variability in Third World Agriculture: The Consequences for Food Security* (Baltimore, MD: John Hopkins Press)
- Tong K., Saing C, & Hem S. (2009), *Trends in Living Standards of 90 Rural Households in Poverty Dynamics Studies Villages*, mimeo (Phnom Penh: CDRI)
- Tong K. (2010), “How Did Cambodian Rural Households Cope with Shocks from Food and Oil Price Increases?”, *Annual Development Review 2009-10*, pp. 70-79 (Phnom Penh: CDRI)
- Tong K. (forthcoming), *The Impact of the Global Financial and Economic Crisis on Poverty* (Phnom Penh: CDRI)
- van den Berg, M. & G.E. Kumbi (2006), “Poverty and the Rural Nonfarm Economy in Oromia, Ethiopia”, *Agricultural Economics*, Vol. 35 (S3), pp. 469-475
- Woldenhanna, T. & A. Oskam (2001), “Income Diversification and Entry Barriers: Evidence from the Tigray of Northern Ethiopia”, *Food Policy*, Vol. 26 (40), pp. 351-365
- Wooldridge, J. (2002), *Econometric Analysis of Cross-Sectional and Panel Data* (Cambridge MA: MIT Press)
- World Bank (2009), *Poverty Profile and Trends in Cambodia: Findings from the 2007 Cambodia Socio-Economy Survey* (Washington, DC: World Bank)



## CDRI WORKING PAPERS

- 1) Kannan, K.P. (November 1995), *Construction of a Consumer Price Index for Cambodia: A Review of Current Practices and Suggestions for Improvement*.
- 2) McAndrew, John P. (January 1996), *Aid Infusions, Aid Illusions: Bilateral and Multilateral Emergency and Development Assistance in Cambodia. 1992-1995*.
- 3) Kannan, K.P. (January 1997), *Economic Reform, Structural Adjustment and Development in Cambodia*.
- 4) Chim Charya, Srun Pithou, So Sovannarith, John McAndrew, Nguon Sokunthea, Pon Dorina & Robin Biddulph (June 1998), *Learning from Rural Development Programmes in Cambodia*.
- 5) Kato, Toshiyasu, Chan Sophal & Long Vou Piseth (September 1998), *Regional Economic Integration for Sustainable Development in Cambodia*.
- 6) Murshid, K.A.S. (December 1998), *Food Security in an Asian Transitional Economy: The Cambodian Experience*.
- 7) McAndrew, John P. (December 1998), *Interdependence in Household Livelihood Strategies in Two Cambodian Villages*.
- 8) Chan Sophal, Martin Godfrey, Toshiyasu Kato, Long Vou Piseth, Nina Orlova, Per Ronnås & Tia Savora (January 1999), *Cambodia: The Challenge of Productive Employment Creation*.
- 9) Teng You Ky, Pon Dorina, So Sovannarith & John McAndrew (April 1999), *The UNICEF/Community Action for Social Development Experience—Learning from Rural Development Programmes in Cambodia*.
- 10) Gorman, Siobhan, with Pon Dorina & Sok Kheng (June 1999), *Gender and Development in Cambodia: An Overview*.
- 11) Chan Sophal & So Sovannarith (June 1999), *Cambodian Labour Migration to Thailand: A Preliminary Assessment*.
- 12) Chan Sophal, Toshiyasu Kato, Long Vou Piseth, So Sovannarith, Tia Savora, Hang Chuon Naron, Kao Kim Hourn & Chea Vuthna (September 1999), *Impact of the Asian Financial Crisis on the SEATEs: The Cambodian Perspective*.
- 13) Ung Bunleng, (January 2000), *Seasonality in the Cambodian Consumer Price Index*.
- 14) Toshiyasu Kato, Jeffrey A. Kaplan, Chan Sophal & Real Sopheap (May 2000), *Enhancing Governance for Sustainable Development*.
- 15) Godfrey, Martin, Chan Sophal, Toshiyasu Kato, Long Vou Piseth, Pon Dorina, Tep Saravy, Tia Savara & So Sovannarith (August 2000), *Technical Assistance and Capacity Development in an Aid-dependent Economy: the Experience of Cambodia*.
- 16) Sik Boreak, (September 2000), *Land Ownership, Sales and Concentration in Cambodia*.
- 17) Chan Sophal, & So Sovannarith, with Pon Dorina (December 2000), *Technical Assistance and Capacity Development at the School of Agriculture Prek Leap*.
- 18) Godfrey, Martin, So Sovannarith, Tep Saravy, Pon Dorina, Claude Katz, Sarthi Acharya, Sisowath D. Chanto & Hing Thoraxy (August 2001), *A Study of the Cambodian Labour Market: Reference to Poverty Reduction, Growth and Adjustment to Crisis*.
- 19) Chan Sophal, Tep Saravy & Sarthi Acharya (October 2001), *Land Tenure in Cambodia: a Data Update*.



- 20) So Sovannarith, Real Sopheap, Uch Utey, Sy Rathmony, Brett Ballard & Sarthi Acharya (November 2001), *Social Assessment of Land in Cambodia: A Field Study*.
- 21) Bhargavi Ramamurthy, Sik Boreak, Per Ronnås and Sok Hach (December 2001), *Cambodia 1999-2000: Land, Labour and Rural Livelihood in Focus*.
- 22) Chan Sophal & Sarthi Acharya (July 2002), *Land Transactions in Cambodia: An Analysis of Transfers and Transaction Records*.
- 23) McKenney, Bruce & Prom Tola. (July 2002), *Natural Resources and Rural Livelihoods in Cambodia*.
- 24) Kim Sedara, Chan Sophal & Sarthi Acharya (July 2002), *Land, Rural Livelihoods and Food Security in Cambodia*.
- 25) Chan Sophal & Sarthi Acharya (December 2002), *Facing the Challenge of Rural Livelihoods: A Perspective from Nine Villages in Cambodia*.
- 26) Sarthi Acharya, Kim Sedara, Chap Sotharith & Meach Yady (February 2003), *Off-farm and Non-farm Employment: A Perspective on Job Creation in Cambodia*.
- 27) Yim Chea & Bruce McKenney (October 2003), *Fish Exports from the Great Lake to Thailand: An Analysis of Trade Constraints, Governance, and the Climate for Growth*.
- 28) Prom Tola & Bruce McKenney (November 2003), *Trading Forest Products in Cambodia: Challenges, Threats, and Opportunities for Resin*.
- 29) Yim Chea & Bruce McKenney (November 2003), *Domestic Fish Trade: A Case Study of Fish Marketing from the Great Lake to Phnom Penh*.
- 30) Hughes, Caroline & Kim Sedara with the assistance of Ann Sovatha (February 2004), *The Evolution of Democratic Process and Conflict Management in Cambodia: A Comparative Study of Three Cambodian Elections*.
- 31) Oberndorf, Robert B. (May 2004), *Law Harmonisation in Relation to the Decentralisation Process in Cambodia*.
- 32) Murshid, K.A.S. & Tuot Sokphally (April 2005), *The Cross Border Economy of Cambodia: An Exploratory Study*.
- 33) Hansen, Kasper K. & Neth Top (December 2006), *Natural Forest Benefits and Economic Analysis of Natural Forest Conversion in Cambodia*.
- 34) Pak Kimchoeun, Horng Vuthy, Eng Netra, Ann Sovatha, Kim Sedara, Jenny Knowles & David Craig (March 2007), *Accountability and Neo-patrimonialism in Cambodia: A Critical Literature Review*.
- 35) Kim Sedara & Joakim Öjendal with the assistance of Ann Sovatha (May 2007), *Where Decentralisation Meets Democracy: Civil Society, Local Government, and Accountability in Cambodia*.
- 36) Lim Sovannara (November 2007), *Youth Migration and Urbanisation in Cambodia*.
- 37) Chem Phalla *et al.* (May 2008), *Framing Research on Water Resources Management and Governance in Cambodia: A Literature Review*.
- 38) Pak Kimchoeun and David Craig (July 2008), *Accountability and Public Expenditure Management in Decentralised Cambodia*.
- 39) Horng Vuthy and David Craig (July 2008), *Accountability and Planning in Decentralised Cambodia*.
- 40) Eng Netra and David Craig (March 2009), *Accountability and Human Resource Management in Decentralised Cambodia*.

- 41) Hing Vutha and Hossein Jalilian (April 2009), *The Environmental Impacts of the ASEAN-China Free Trade Agreement for Countries in the Greater Mekong Sub-region*.
- 42) Thon Vimealea, Ou Sivhuoch, Eng Netra and Ly Tem (October 2009), *Leadership in Local Politics of Cambodia: A Study of Leaders in Three Communes of Three Provinces*.
- 43) Hing Vutha and Thun Vathana (December 2009), *Agricultural Trade in the Greater Mekong Sub-region: The Case of Cassava and Rubber in Cambodia*.
- 44) Chan Sophal (December 2009), *Economic Costs and Benefits of Cross-border Labour Migration in the GMS: Cambodia Country Study*.
- 45) CDRI Publication (December 2009), *Economic Costs and Benefits of Cross-country Labour Migration in the GMS: Synthesis of the Case Studies in Thailand, Cambodia, Laos and Vietnam*.
- 46) CDRI Publication (December 2009), *Agriculture Trade in the Greater Mekong Sub-region: Synthesis of the Case Studies on Cassava and Rubber Production and Trade in GMS Countries*.
- 47) Chea Chou (August 2010), *The Local Governance of Common Pool Resources: The case of Irrigation Water in Cambodia*.
- 48) CDRI Publication (August 2010), *Empirical Evidence of Irrigation Management in the Tonle Sap Basin: Issues and Challenges*.
- 49) Chem Phalla and Someth Paradis (March 2011), *Use of Hydrological knowledge and Community Participation for Improving Decision-making on Irrigation Water Allocation*.
- 50) Pak Kimchoeun (May 2011), *Fiscal Decentralisation in Cambodia: A Review of Progress and Challenges*
- 51) Christopher Wokker, Paulo Santos, Ros Bansok and Kate Griffiths (June 2011), *Irrigation Water Productivity in Cambodian Rice System*
- 52) Ouch Chandarany, Saing Chanhang and Phann Dalis (June 2011), *Assessing China's Impact on Poverty Reduction In the Greater Mekong Sub-region: The Case of Cambodia*
- 53) SO Sovannarith, Blake D. Ratner, Mam Kosal and Kim Sour (June 2011), *Conflict and Collective Action in Tonle Sap Fisheries: Adapting Institutions to Support Community Livelihoods*
- 54) Nang Phirun, Khiev Daravy, Philip Hirsch and Isabelle Whitehead (June 2011), *Improving the Governance of Water Resources in Cambodia: A Stakeholder Analysis*
- 55) Kem Sothorn, Chhim Chhun, Theng Vuthy and SO Sovannarith (July 2011), *Policy coherence in agricultural and rural development: Cambodia*
- 56) Tong Kimsun, Hem Socheth and Paulo Santos (July 2011), *What Limits Agricultural intensification in Cambodia? The Role of Emigration, Agricultural Extension Services and Credit Constraints*
- 57) Tong Kimsun, Hem Socheth and Paulo Santos (August 2011), *The Impact of Irrigation on Household Assets*
- 58) Hing Vutha, Lun Pide and Phann Dalis (August 2011), *Irregular Migration from Cambodia: Characteristics, Challenges and Regulatory Approach*.
- 59) Chem Phalla, Philip Hirsch and Someth Paradis (September 2011), *Hydrological Analysis in Support of Irrigation Management: A Case Study of Stung Chrey Bak Catchment, Cambodia*

- 60) Saing Chan Hang, Hem Socheth and Ouch Chandarany with Phann Dalis and Pon Dorina (November 2011), *Foreign Investment in Agriculture in Cambodia*
- 61) Ros Bandeth, Ly Tem and Anna Thompson (September 2011), *Catchment Governance and Cooperation Dilemmas: A Case Study from Cambodia*.
- 62) Chea Chou, Nang Phirun, Isabelle Whitehead, Phillip Hirsch and Anna Thompson (October 2011), *Decentralised Governance of Irrigation Water in Cambodia: Matching Principles to Local Realities*.
- 63) Heng Seiha, Kim Sedara and So Sokbunthoeun (October 2011), *Decentralised Governance in Hybrid Polity: Localisation of Decentralisation Reform in Cambodia*
- 64) Tong Kimsun and Sry Bopharath (November 2011), *Poverty and Environment Links: The Case of Rural Cambodia*.
- 65) Ros Bansok, Nang Phirun and Chhim Chhun (December 2011), *Agricultural Development and Climate Change: The Case of Cambodia*
- 66) TONG Kimsun (February 2012), *Analysing Chronic Poverty in Rural Cambodia Evidence from Panel Data*
- 67) Keith Carpenter with assistance from PON Dorina (February 2012), *A Basic Consumer Price Index for Cambodia 1993–2009*
- 68) Roth Vathana (March 2012), *Sectoral Composition of China's Economic Growth, Poverty Reduction and Inequality: Development and Policy Implications for Cambodia*
- 69) CDRI Publication (March 2012), *Understanding Poverty Dynamics: Evidence from Nine Villages in Cambodia*
- 70) Hing Vutha, Saing Chan Hang and Khieng Sothy (August 2012), *Baseline Survey for Socioeconomic Impact Assessment: Greater Mekong Sub-region Transmission Project*
- 71) Kim Sedara and Joakim Öjendal with Chhoun Nareth and Ly Tem (December 2012), *A Gendered Analysis of Decentralisation Reform in Cambodia*
- 72) Hem Socheth (March 2013), *Impact of the Global Financial Crisis on Cambodian Economy at Macro and Sectoral Levels*
- 73) Hay Sovuthea (March 2013), *Government Response to Inflation Crisis and Global Financial Crisis*
- 74) Ngin Chanrith (March 2013), *Impact of the Global Financial Crisis on Employment in SMEs in Cambodia*
- 75) Tong Kimsun (March 2013), *Impact of the Global Financial Crisis on Poverty: Evidence from Nine Villages in Cambodia*
- 76) Hing Vutha (March 2013), *Impact of the Global Financial Crisis on the Rural Labour Market: Evidence from Nine Villages in Cambodia*
- 77) Saing Chan Hang (March 2013), *Households' Vulnerability to Global Financial Crisis and Their Risk Coping Strategies: Evidence from Nine Rural Villages in Cambodia*

**CDRI -** Cambodia's leading  
independent development policy research institute

📍 56 Street 315, Tuol Kork

✉ PO Box 622, Phnom Penh, Cambodia

☎ (855 23) 881 384/881 701/881 916/883 603

📠 (855 23) 880 734

E-mail: [cdri@cdri.org.kh](mailto:cdri@cdri.org.kh)

Website: [www.cdri.org.kh](http://www.cdri.org.kh)

Price: USD1.50



9 789995 052751